



**GB LIFTS** 

# HISTORY

- 1988 GB Lifts Ltd established
- 1999 ISO 9002
- 2000 ISO 9001:1994
- 2001 Largest order to date with Prudential Worldwide Properties, £2m, 19 scenic lifts, successfully completed
- 2003 ISO 9001:2000
- 2004 Dorset Office opened
- 2004 LEIA members



# UK COVERAGE

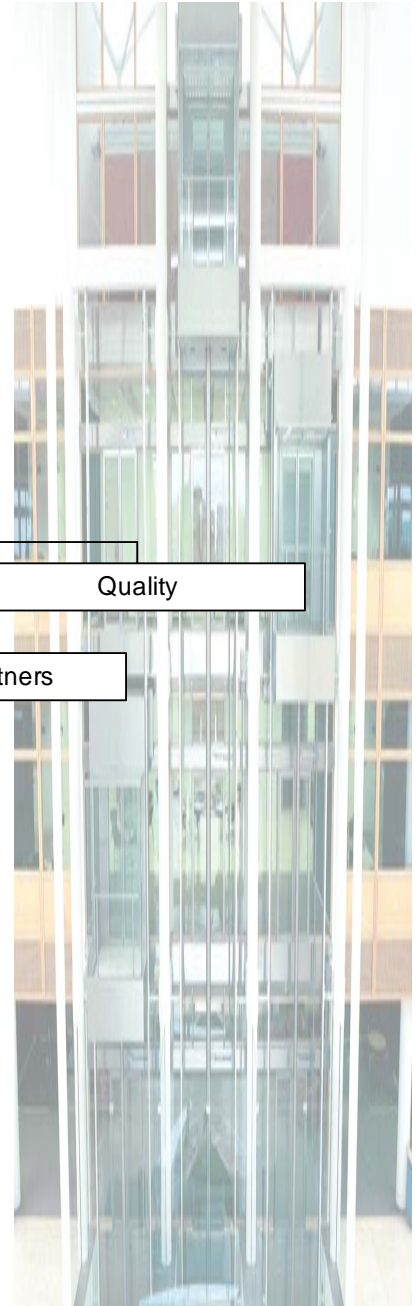
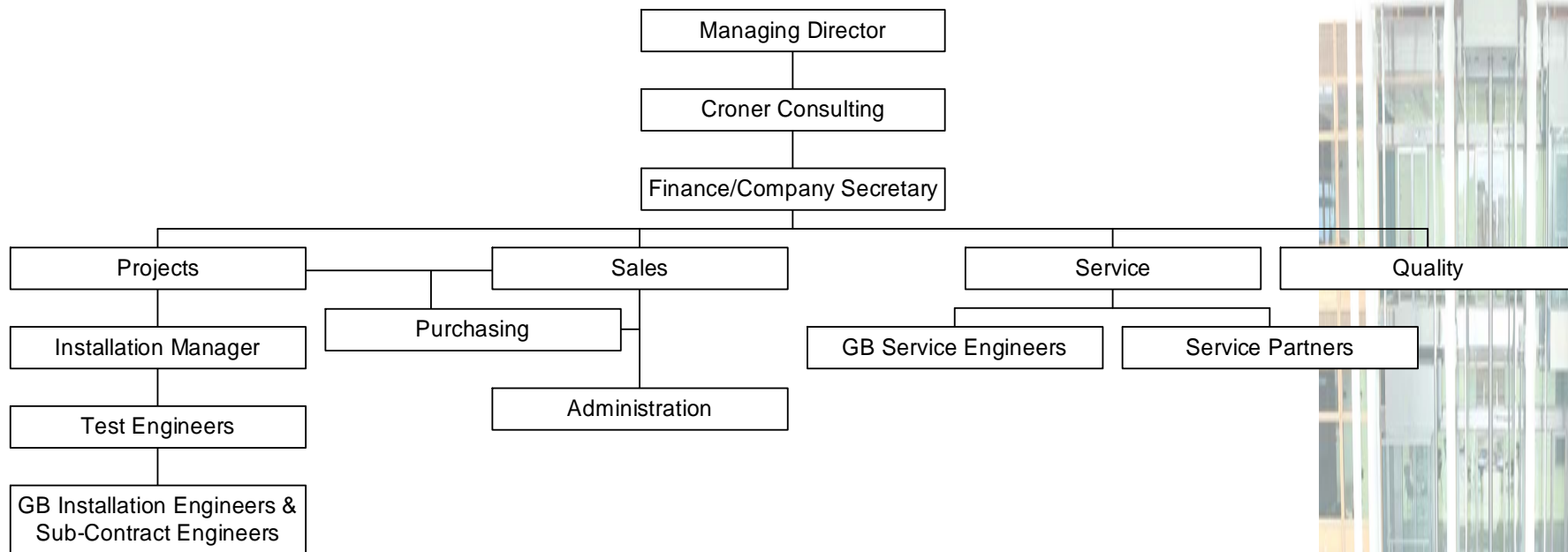
## Installations & Servicing



- GB Lifts Offices
- Lift Installations, England & Wales
- Servicing



# COMPANY STRUCTURE



# OUR GOAL

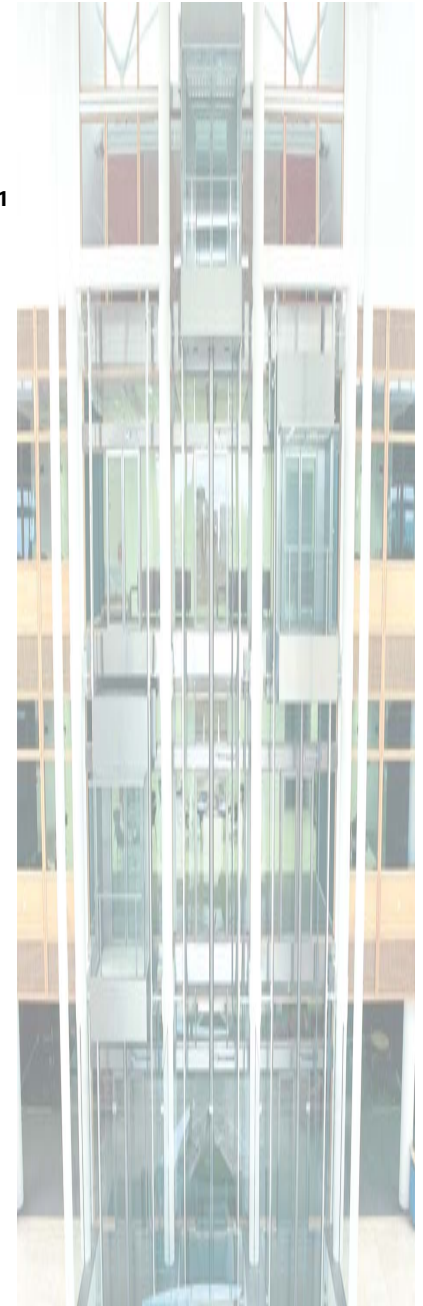
To compete at the highest level, thereby maintaining our position as a leading independent supplier of lifts throughout the United Kingdom, and to serve our established clients with an excellent and ongoing level of service



# FINANCIALS

	31/03/07 Estimate	31/03/06	31/03/05	31/03/04	31/03/03	31/03/02	31/03/01
	£,000	£,000	£,000	£,000	£,000	£,000	£,000
<b>Turnover</b>	£3,4	£3,0	£2,5	£1,94	£1,9	£1,735	£1,014
<b>Margins</b>	30%	30%	30%	30%	31%	25%	29%

- Accounts to 31<sup>st</sup> March 2006 currently with accountants for finalisation
- Sustained growth in turnover, currently 80 lift installations ongoing
- Consistent levels of margin
- Controlled overhead costs
- Substantial increase in net worth and net assets
- No bank borrowings – all growth funded out of retained profits



# QUALITY

- Certified Quality Management System
- ISO 9001:2000
- Lift Regulations Schedule 12
- Training
- BSI members
- Intranet



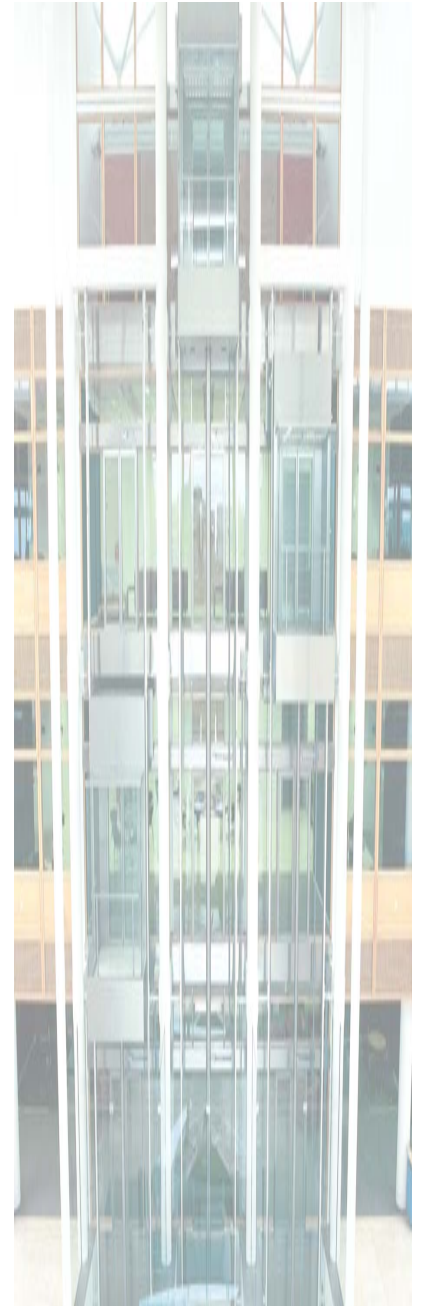
# HEALTH & SAFETY

- Croner Consulting
- Health & Safety Management System
- CSCS trained
- Operative involvement
- Proactive approach to health & safety on a daily basis

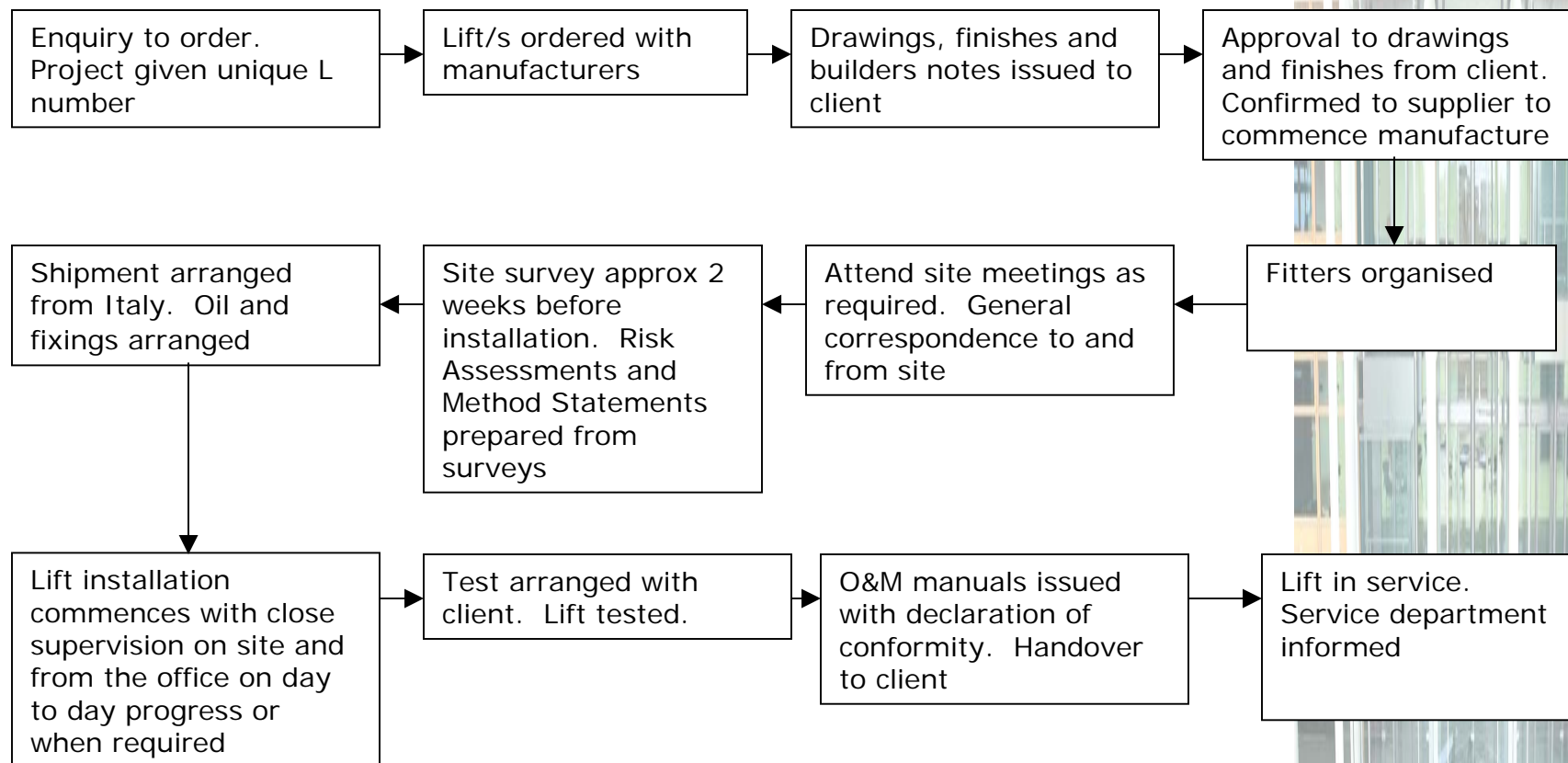


# GB LIFTS STRENGTHS

- Knowledge and expertise
- Design Flexibility
- Our ability to adapt product to meet client's specification
- Our continually developing product range
- Supplier relationship
- High Level of Client Service

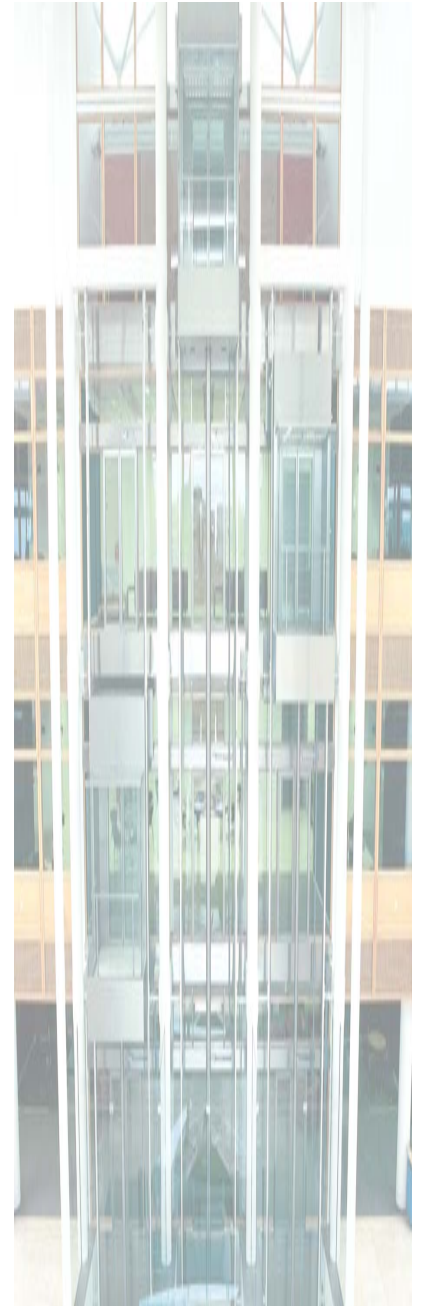


# PROJECT MANAGEMENT



# PRODUCT RANGE

- Standard Lifts:
  - Passenger
  - Platform lifts
  - Scenic lifts
  - Goods lifts
- Bespoke lifts and specials:
  - Lord Sainsbury's
  - Somerset House
  - Foreign Office
  - Superdomus & DTI



# CLIENTS

- Repeat clients including:
  - Norwest Holst
  - Bowmer & Kirkland (inc. B&K Building Services)
  - Wildgoose Construction
  - Mowlem
  - Thomas Vale
  - Clegg Construction
  - Mansells
  - Balfour Beatty
  - SOL Construction
  - Sapcote
- 'Special' Projects including:
  - Prudential Worldwide Properties
  - Foreign & Commonwealth Offices
  - Wellcome Trust – Genome Campus
  - Somerset House – Gilbert Collection
  - Soccer Sport
  - Lord Sainsbury's – Holland Park





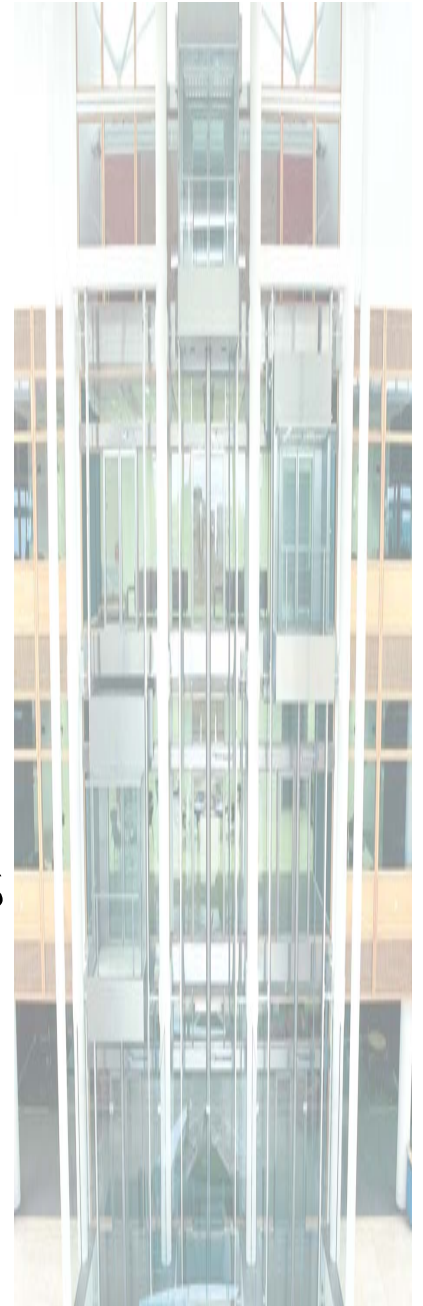
Gilbert Collection, Somerset House  
(above and below)



BT Cellnet, Leeds

# SERVICING

- Planned maintenance
- 24 hr breakdown cover
- Statutory inspections
- Repairs
- Refurbishment
- Stockholders in UK for IGV spares



# FUTURE

- Controlled growth with efficiency
- Continual product development
- Selective with clients and formation of partnership agreements
- Extension to Nottingham Offices 2006
- Profitability

